



MAIN CATALOG

# PLC Automation

PLCs, Engineering Software, SCADA and HMI



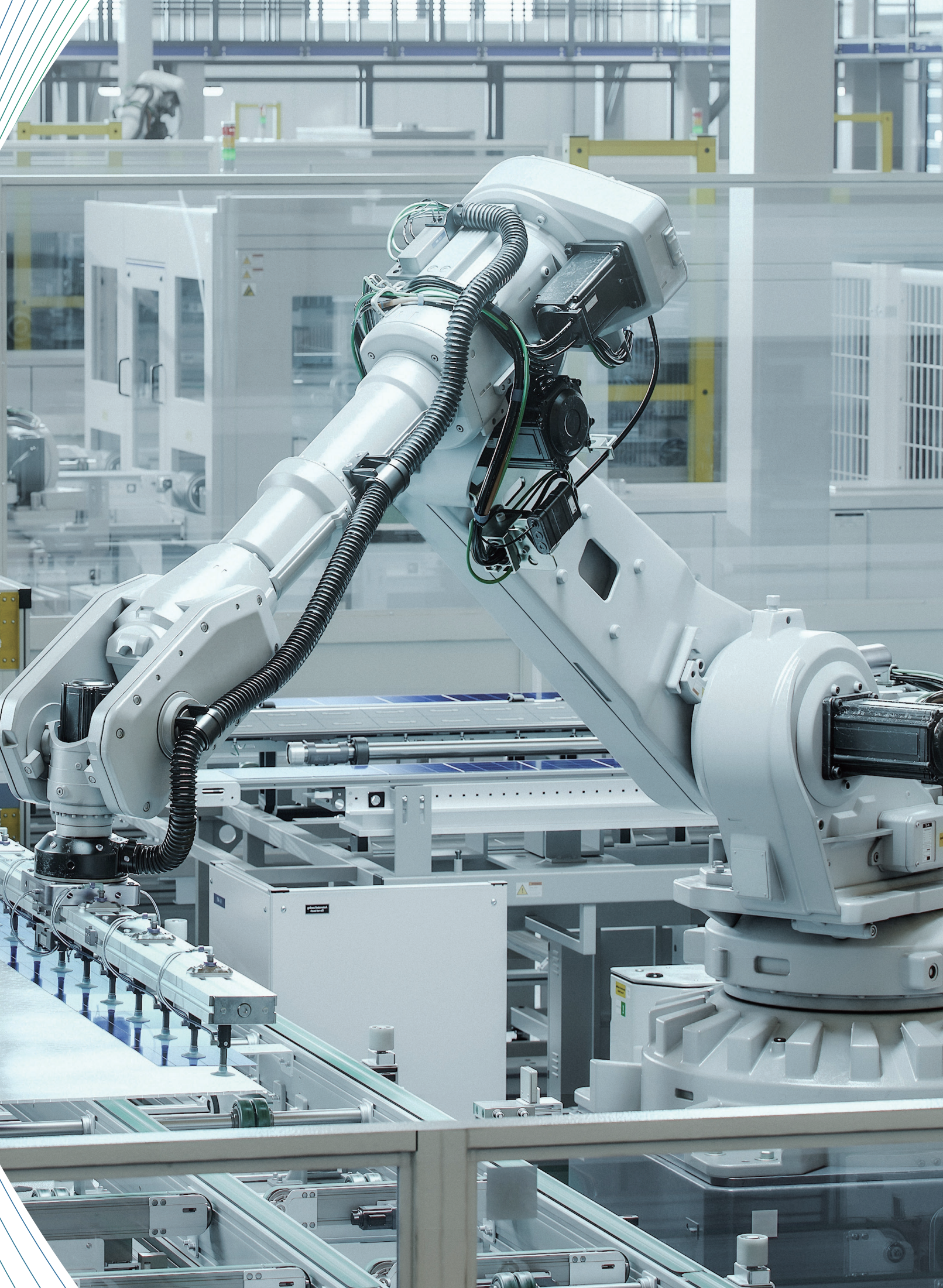
Intelligence For Excellence

[www.hollysys.com](http://www.hollysys.com)

# Contents

03	About HollySys
05	Overview
07	LK Large Scale PLC
11	LKS Safety PLC
14	LX High-Performance PLC
18	LE Compact PLC
21	MC Motion Controller
23	FA-AutoThink Engineering Software
25	SCADA Software
29	HMI







# About HollySys

**Established in 1993, HollySys stands as a premier provider of intelligent solutions.**

HollySys' business encompasses Industrial Intelligence, Transport Intelligence, and Food & Pharmaceutical Intelligence, operating through business centers in Singapore, China, India, Indonesia, the Middle East and Central Asia. With a steadfast commitment to continuous innovation and R&D since its inception, HollySys has been at the forefront of shaping intelligent solutions across diverse industries. Rooted in the belief "Intelligence For Excellence", our dedication revolves around intelligent manufacturing products and solutions, centered on control and safety systems, complemented by instrumentation, industrial software, and full life-cycle and training services. Committed to transforming industries through innovation and excellence in intelligence, HollySys is your trusted partner on the path to heightened efficiency and technological advancement.

Global Customers

**35,000+**

Global Implemented Projects

**45,000+**

Global Employees

**5,500+**

R&D Staffs

**1,500+**

Intellectual Property

**2,000+**

Global Presence

**60+**Countries



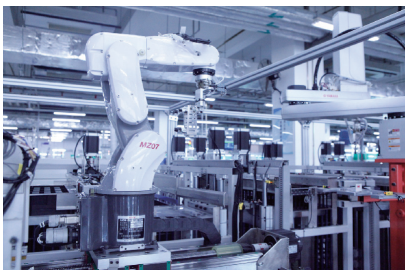


## Production & Manufacturing

HollySys Intelligent Digital Workshop provides lean, automated, and data-driven management across all production stages, from process development and manufacturing to internal logistics. Seamlessly integrated from control to applications, it ensures comprehensive quality traceability. The workshop's advanced production capabilities excel in both small and multi-batch scenarios.



SMT Workshop



Flexible Assembly  
and Testing Line



Automatic Welding  
System



Intelligent Warehousing  
Management System



Internal Automatic  
Logistics System



Intelligent Production  
Management System



Simulation  
Test Center

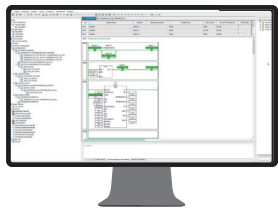


# Overview

## PLC Automation Product Family

HollySys provides an extensive portfolio of PLC, SCADA and HMI products. So far, HollySys PLC automation has achieved significant industry recognition for delivering high performance, quality and reliability.

### FA-AutoThink



#### Engineering Software

Unified user interface for hardware setup, control logic programming, compilation, downloading, monitoring, debugging, simulation

### SCADA Software



#### Small, Medium, and Large Automation Applications

Comprehensive monitoring, production scheduling management, environmental protection, energy saving, municipal security

### LK Large Scale PLC



#### Medium and Large Applications of Industrial Automation

Rail transit, water treatment, tunnel, integrated pipeline, heating, water conservancy, oil & gas, electric power, production line, metallurgy, tunnel, energy, chemical, mining

### LKS Safety PLC



#### Functional Safety for Factories and Infrastructure

Petrochemical, chemical, oil & gas, electric power, metallurgy, energy, power generation, gas plant, pharmaceutical, natural gas

### LX High-Performance PLC



#### High-End Equipment and Complicated Production Line

Semiconductor, lithium battery, new energy, logistics, automotive, port

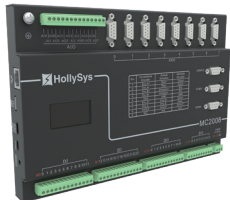
### LE Compact PLC



#### Single Device Control

Water supply equipment, Heating Ventilation Air Conditioning (HVAC), packaging equipment, environmental protection equipment, building materials, environmental monitoring, printing machinery

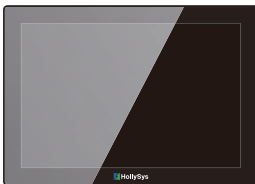
### MC Motion Controller



#### Complicated Single Device Control

Bending machines, cross-cutting machines, multi-wire sawing machines, flying saws, folding machines, crack-chasing saws

### HMI



#### High-Performance Control Panel

Multi-size touchscreens from 4.3 to 15.6 inches and well integrated with mainstream controllers, inverters, and servos



# LK Large Scale PLC

## Key Features

LK Large Scale PLC is designed for medium to large-scale control systems and high-performance control applications. It boasts single CPU and dual-rack redundant CPU design, ensuring fast operation and stable control. Drawing upon over 20 years of professional expertise, LK offers reliable, innovative factory automation, evolving for better reliability. With 10,000+ global installations, LK is rigorously validated for optimal performance.

### High Reliability

- Field-to-system and channel-to-channel isolation
- Fault diagnosis, limit alarm, and fail-safe output
- MRAM non-volatile memory for power-loss data retention

### Harsh Environmental Adaptability

- Operating temperature from -20°C to +70°C
- Storage temperature from -40°C to +80°C
- PCB with conformal coating
- Compliant with EMC standards (IEC61000-4/IEC61131-2)

### High Performance

- Less than 100 ms of CPU switchover time
- Less than 100  $\mu$ s of minimum task scheduling time
- Less than 200 ms of loop response time

### Easy to Use

- Hot swap for all modules
- Foolproof design for module mounting

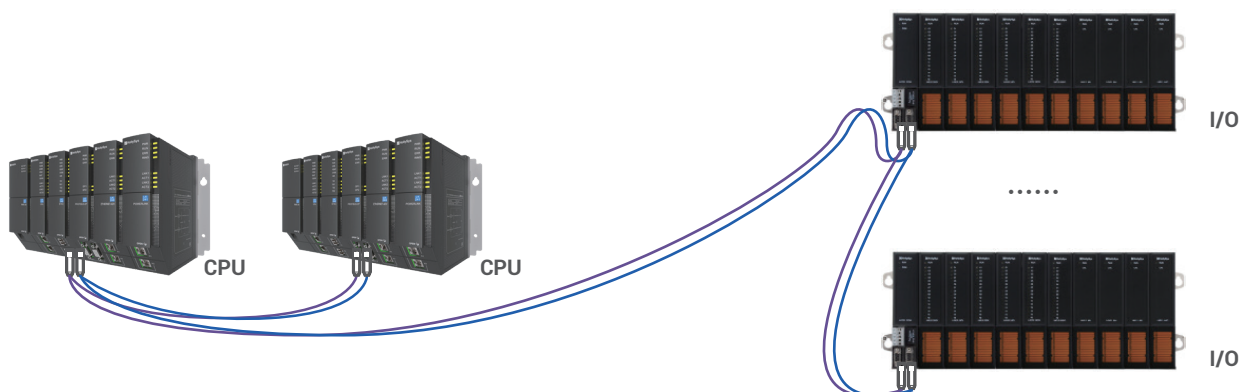




# LK Large Scale PLC

## Technical Data

Model		LK220	LK222	LK224
Controller clock speed		600 MHz	667 MHz	766 MHz
Instruction execution time	Bit operation	15 ns	10 ns	7 ns
	Fixed-point operation	15 ns	10 ns	7 ns
	Floating-point operation	25 ns	18 ns	12 ns
Memory	Integrated memory (program + data)	24 MB	32 MB	64 MB
	Power-loss retentive memory	512 KB MRAM (R area: 64 KB; M area: 4 KB)	512 KB MRAM (R area: 96 KB; M area: 6 KB)	512 KB MRAM (R area: 128 KB; M area: 8 KB)
Communication interface	Integrated Ethernet	2 × RJ45 Interface, 10/100M adaptive, dual-network-port redundancy; supporting Modbus TCP and HolliTCP protocols		
Communication protocols	Modbus TCP (max. master/slave connections)	16	32	64
	Powerlink (max. PL slaves)	128	256	256
	Profibus-DP (max. PL slaves)	124	124	124
	Communication modules	LK240 × 1, LK249 × 1, LK246 × 2, LK241 × 1	LK240 × 1, LK249 × 1, LK246 × 2, LK241 × 2	LK240 × 1, LK249 × 1, LK246 × 2, LK241 × 2
Configuration capacity	Input variable area (I)	32 KB max.	64 KB max.	128 KB max.
	Output variable area (Q)	32 KB max.	64 KB max.	128 KB max.
	Global variable area (N)	1 MB	4 MB	6 MB
	Free variable area (M)	1 MB	2 MB	4 MB
	Power-loss retentive area (R)	64 KB max.	96 KB max.	128 KB max.



\*Dual-rack redundancy in CPU, power supply, and network



# LK Large Scale PLC

## Ordering Data

Model	Specifications
<b>CPU module</b>	
LK130	4-slot control backplane
LK132	6-slot control backplane
LK133	7-slot control backplane
LK220	600 MHz, 24 MB integrated storage zone, and redundancy
LK222	667 MHz, 32 MB integrated storage zone, and redundancy
LK224	766 MHz, 64 MB integrated storage zone, and redundancy
LK240	Redundant synchronization module, two optical fiber communication interfaces, LC interface type
LK241	Powerlink master station communication module
LK246	Ethernet communication processor module, two 10/100/1000 Mbit/s Ethernet ports
LK249	Profibus-DP master station communication module, 2-channel DB9 communication interface
LK921	DC power adapter module, input voltage: 12 to 30 V DC
LK922	Redundant DC power module, input voltage: 19.5 to 60 V DC
LKA102	LK220 battery power box module
LKA103	LK220 capacitor power box module
LKA104	Profibus-DP bus connector
LKA106	Synchronous fiber, 1 m
LK141	Empty module of the main control backplane
GACS-1312-20ID	Optical module, single-mode, 20 km transmission distance, hot-plug, used for the LK240 module
GACS-8512-02ID	Optical module, multi-mode, 2 km transmission distance, hot-plug, used for the LK240 module
<b>Power module</b>	
LK910	Power module, 24 V DC @ 5 A output
HPW2405G	85 to 264 V AC input, 24 V DC @ 5 A output
HPW2410G	85 to 264 V AC input, 24 V DC @ 10 A output
HPW2420G	85 to 264 V AC input, 24 V DC @ 20 A output
HPWR01G	Input: 22 to 60 V DC, 20 A; output vin-0.65 V, 20 A @ max.
<b>Communication module</b>	
LK255	Profibus-DP slave station communication module for access to third party master station
LK238	4-channel serial port communication module
LK239	Modbus RTU master/slave station communication module
<b>Interface module</b>	
LK231	Profibus-DP communication transfer module
LK232	Profibus-DP bus repeater module with relay function
LK233	Profibus-DP bus photoelectric transceiver
LK234	Ethernet interface module, used with LK220 PLC
LK235	Powerlink interface module, used with LK220 PLC
LK250	Profibus-DP communication interface expansion module, which can expand 10 Profibus-DP slave modules
LE5406	Profibus-DP to LE bus communication interface expansion module, used with LK220 PLC

<b>Digital I/O module</b>	
LK610	16-channel digital input module, 24 V DC, sinking type
LK616	32-channel digital input module, 24 V DC, sinking type
LK710	16-channel digital output module, 10 to 30 V DC, transistor output, 0.5 A capacity
LK716	32-channel digital output module, 24 V DC, transistor output
LK720	8-channel normally open relay output module, 10 to 265 V AC / 5 to 125 V DC, relay output, 2 A @ max
<b>Analog I/O module</b>	
LK410	8-channel analog input module, voltage type, -10.25 V to 10.25 V / 0 to 10.25 V / 0 to 5.125 V
LK411	8-channel analog input module, current type, 0 to 20 mA / 4 to 20 mA
LK412	6-channel analog input module, voltage/current type, $\pm 10$ -channel 0 to 5 V / 0 to 10 V / 0 to 20 mA / 4 to 20 mA, inter-channel isolation
LK430	6-channel analog input module, PT100/200/500/1000, Ni 100/120/200/500, Cu 10/50
LK432	8-channel isolated thermoresistive analog input module
LK441	8-channel analog input module, B/C/E/J/K/N/R/S/T thermocouple, -12 mV to 32 mV (78 mV), with cold end compensation
LK511	4-channel analog output module, current type, 0 to 20 mA/4 to 20 mA, inter-channel isolation
LK512	8-channel analog output module, voltage/current type, 0 to 20 mA/4 to 20 mA/0 to 5 V/0 to 10 V/1 to 5 V/-5 to 5 V/-10 to 10 V
<b>Special function module</b>	
LK620	2-channel high-speed counting module up to 1 MHz
LK621	2-channel SSI absolute value coder module
LK622	6-channel high-accuracy frequency measurement module
LK630	16-channel SOE module with a resolution of 1 ms, used with LK210 PLC
LK631	14-channel SOE module, event resolution 0.5 ms, time scale precision 1 ms, used with LK220 PLC
<b>I/O backplane</b>	
LK117	Extension backplane, 11 slots, DB9 interface
LK118	Extension backplane, 5 slots, DB9 interface
<b>POWERLINK switch</b>	
SP100-2FP4T-SFP	Powerlink Ethernet switch, 2 SFP optical ports, 4 Ethernet electrical ports, ring network, star topology, dual 24 V power inputs, and guide rail installation
SP010-1FP1T-SFP	Powerlink industrial Ethernet optical-to-electrical converter, one SFP optical port, one Ethernet electrical port
SFP-FS-LC	Optical module, single-mode, 20 km transmission distance, hot-plug, used for SP100/SP010 modules
SFP-FM-LC	Optical module, multi-mode, 2 km transmission distance, hot-plug, used for SP100/SP010 modules
<b>Accessories</b>	
LKX1030	DIO prefabricated cable, 3 m, color ring
LKX1130	AIO prefabricated cable, 3 m, color ring
LKX1030L	DIO prefabricated cable, 3 m, number tube, tubular terminal
LKX1130L	AIO prefabricated cable, 3 m, number tube, tubular terminal
LKF003	Backplane anti-mixing pin rotating tool
LKC131	Empty slot module
LKC171	Terminal cover



# LKS Safety PLC

## Key Features

LKS Safety PLC is SIL2-certified by TÜV SÜD and tailored for complex safety applications that require high reliability, efficiency, and flexibility. It protects people, equipment, processes, and investments, giving customers confidence in their safety needs. Utilizing 1oo1D architecture, it is ideal for critical applications such as Emergency Shutdown Systems (ESD), Process Shutdown Systems (PSD), Burner Management Systems (BMS), Fire & Gas Systems (FGS), Emergency Trip Systems (ETS), and Gas Detection Systems (GDS).

## Enhanced Safety

- 1oo1D architecture
- Software with de-compilation verification
- Compliant with SIL2 standards (IEC61508/IEC61511/EN50128/ EN50129/EN50126)

## High Reliability

- 99.99% safety loop availability
- Over 90% of diagnosis coverage
- 100,000-hour MTBF

## High Scalability

- 124 I/O slave stations / 900+ I/O points per control station
- Seamless integration with LK modules



# LKS Safety PLC

## Technical Data

Safety CPU Module LK220S	
Item	Specifications
<b>Operation speed</b>	
CPU dominant frequency	Dual-core, 667 MHz
Instruction execution speed	Typical value: 2.5 DMIPS/MHz
<b>Memory</b>	
Program storage	32 MB (16 MB for the system and 16 MB for users)
Memory	512 MB, 800 Mbit/s, 32-bit width
Power-loss retentive	512 KB
Expanding storage	SD card, up to 32 GB
<b>Ethernet</b>	
10/100M	2-channel, dual-network-port redundancy, Modbus TCP protocol supported
<b>Real-time clock</b>	
Data format	Year: month: day: hour: minute: second, BCD code
Clock accuracy	Not more than 1 minute/month @ 25°C
<b>Backplane bus</b>	
Communication speed	2-channel high-speed counting module up to 1 MHz
Load capacity	2.5 Gb/s
<b>Hot swap</b>	
Hot swap module	Support
<b>System capacity</b>	
I/O capacity	I/O capacity supported by the system: greater than 900 points
<b>Configuration capacity</b>	
Input variable area (I)	Maximum space: 128 KB
Input variable area (Q)	Maximum space: 128 KB
Global variable area (G)	Maximum space: 1 MB
Free variable area (M)	Maximum space: 1 MB
Power-loss retentive area (R)	Maximum space: 64 KB
Special register area (S)	16 KB
<b>Power</b>	
Power supply	Provided by backplane
Module (max.)	300 mA @ 24 V DC
Backup battery	Capacitor power supply
<b>Redundancy</b>	
Dual backplane redundancy	Support hot standby
<b>Start time</b>	
Duration from module power-on to user project start	≤ 60s
<b>Physical characteristics</b>	
Installation mode	Backplane slot
Module dimensions (W × H × D)	44.7 mm × 166 mm × 152 mm
Weight	382 g
<b>Environmental conditions</b>	
Operating temperature	0°C to 60°C
Storage temperature	-40°C to + 70°C
Relative humidity	5% to 95% non-condensing



# LKS Safety PLC

## Ordering Data

Model	Specifications
<b>CPU module</b>	
LK220S	Safety CPU module, 667 MHz, bit instruction 0.013 ms/K, program 32 MB, power-loss retentive: 512 KB
LK240S	Safety redundant synchronous communication module, 2-channel redundant optical fiber communication interface, interface type: LC
LK249S	Safety PROFIsafe master station communication module, dual DB9 connectors, dual redundant bus links, support for hot plugging
LK921S	Safety 24 V DC power module, input voltage 12 to 30 V DC, input terminals can be independently plugged.
LK130	4-slot control backplane
LKA103	LK220 capacitor power box module
LKA104	Profibus-DP bus connector
LKA106	Synchronous fiber, 1 m
GACS-1312-20ID	Optical module, single-mode, 20 km transmission distance, hot-plug, used for LK240S
GACS-8512-02ID	Optical module, multi-mode, 2 km transmission distance, hot-plug, used for LK240S
<b>Interface module</b>	
LK232S	Safety PROFIsafe bus repeater module with terminal resistor
<b>Digital I/O module</b>	
LK610S	Safety 8-channel digital input module, non-polarity dry contact input, field voltage 20.4 V DC to 28.8 V DC
LK611S	Safety 8-channel digital input module, non-polarity dry contact input (with line fault detection function), field voltage 20.4 V DC to 28.8 V DC
LK630S	Safety 8-channel digital input module, supporting SOE event recording, non-polarity dry contact input, field voltage 20.4 V DC to 28.8 V DC
LK710S	Safety 8-channel digital output module with output voltage range: 20.4 V DC to 28.8 V DC
<b>Analog I/O module</b>	
LK411S	Safety 8-channel analog input module, 0 to 20 mA / 4 to 20 mA, supporting 2-wired and 4-wired instruments
<b>I/O backplane</b>	
LK117	Extension backplane, 11 slots, DB9 interface
LK118	Extension backplane, 5 slots, DB9 interface
<b>Power module</b>	
QS10.241	Safety power module, 220 V AC, 10 A, 24 V
YR2.DIODE	Redundant module, 24 V DC/10 A input, 20 A output
<b>Accessories</b>	
LKC132	I/O backplane empty module
LK141	Empty module of the main control backplane

# LX High-Performance PLC

## Key Features

LX high-performance PLC, the result of 30 years of HollySys R&D, stands out for its ultra-thin design, speed, and reliability. It meets rigorous standards for compactness, rapid response, and ISO 13849 functional safety. It is ideal for high-end applications in semiconductor manufacturing, lithium battery production, new energy, logistics, automotive, port operations, etc.

### High Scalability

- Abundant communication protocols
- End-to-end EtherCAT
- I/O compatible with 3rd-party controllers and EtherCAT/PROFINET master station

### Mini Footprint

- Card-type I/O with only 12 mm in width

### High Performance

- Supporting up to 64-axis servo or inverter, and 30 slave stations
- Compliant with PLCopen standard for motion control
- Supporting C language for advanced applications

### High Speed

- 3 ns to complete bit operation instructions
- 128 dio/μs to complete bus scanning
- 500 μs of minimum task cycle





# LX High-Performance PLC

## Technical Data

LX-CU500 Controller		
Item		Specifications
Power supply		
Field power	Voltage range	24 V DC (19.2 V to 30 V)
	Anti-reverse connection	Support
	Redundancy input	Support
System power	Voltage range	24 V DC (19.2 V to 30 V)
	Anti-reverse connection	Support
Storage		
Input variable area (I)		256 KB
Output variable area (Q)		256 KB
Global variable area (G)		6 MB
Global variable area (M)		8 MB
Power-loss retentive area (R)		500 KB
Program storage (Users)		6 MB
SD expansion card		Expandable with a micro SD card, up to 32 GB
Program scanning and multi-tasking		
Multi-tasking		Supporting both single-task and multi-task configurations
Number of tasks		16
Task type		Supporting periodic, loop, state, event, and one-time task
Periodic task scope		1 ms to 2,000 ms, default is 20 ms
Motion control		
Servo task cycle		500 μs of the minimum task cycle
Motion control instruction		Multi-axis control, electronic gear, electronic cam, absolute positioning, relative positioning, synchronization, speed control, origin, jog interpolation
The maximum axis		64-axis servo or inverter
Motion control method		Supporting EtherCAT motion control and pulse control
Ethernet bus 1 (P0/P1 northbound network)		
Communication ports		2 ports (P1, P2)
Voltage level standard		IEEE 802.3
Communication rate (bps)		1,000 Mbps
Communication protocol 1: ModbusTCP master/slave station protocol		Polling time: 10 ms
		Connections: 32
Communication protocol 2: TCP/IP free protocol		Data input and output areas size: 1 to 32 K
		Connections: 16
Communication protocol 3: EtherNet/IP protocol		Data input and output areas size: 502 B ×15
		Connections: 15 (read while write)
Communication protocol 4: hlink protocol		Data input and output areas size: 1 KB
		Connections: 10

<b>Serial communication</b>	
Interface quantity	1
Interface type	Pluggable
Voltage level standard	RS-485
Protocol type	ModbusRTU master/slave, free ports
Transmission mode and frame format	RTU
Supported function codes	01, 02, 03, 04, 05, 06, 0F, 10 (in hexadecimal)
Maximum number of supported slave stations	Connecting 32 Modbus slave stations
Cable impedance	120 $\Omega$
Communication rate	Supporting 1200, 2400, 4800, 9600 (default), 19200, 38400, 57600, 115200 bps, configurable
Parity check	Odd, even, or no parity bit (configurable)
Trigger mode	Supporting trigger mode to write a function
Diagnostics function	Supporting diagnostic reporting (including diagnostics of the status of each slave station)
Isolation	Isolation between the field and the system
<b>Real-time clock</b>	
Data format	Year: month: day: hour: minute: second, BCD code
Clock accuracy	$\leq \pm 60$ s/month, supporting time synchronization
Power-loss retentive time	1 year (needs to be equipped with an RTC battery)
<b>Others</b>	
Power-loss retentive	Support
Time synchronization	Supporting NTP time synchronization
Log function	Minimum of 10,000 logs
Module protection level	IP20
Time from module startup to user program initiation	$\leq 30$ s
<b>Environmental conditions</b>	
Operating environment temperature	-20°C to 60°C
Operating environment relative humidity	5% to 95% non-condensing
Storage environment temperature	-40°C to 70°C
Storage environment relative humidity	5% to 95% non-condensing



# LX High-Performance PLC

## Ordering Data

Model	Specifications
<b>CPU module</b>	
LX-CU500	Ring network CPU module
<b>Digital input module</b>	
LX-DI002	16-channel PNP DI module (24 V DC)
LX-DI001	16-channel NPN DI module (24 V DC)
LX-DI005	8-channel DI module (5 V DC)
<b>Digital output module</b>	
LX-D0003	16-channel DO module
LX-D0005	8-channel DO module (5 V DC)
LX-D0004	4-channel relay DO module
<b>Position interface module</b>	
LX-ECI001	2-channel 5 V incremental encoder input module
LX-ECI002	2-channel 24 V incremental encoder input module
<b>Pulse output module</b>	
LX-PO001	2-channel pulse output module



# LE Compact PLC

## Key Features

LE compact PLC is tailored for small-scale applications, including single devices, small production lines, and integration with large-scale PLCs. Offering high performance and easy maintenance in a compact design, LE provides reliable, flexible and cost-effective solutions.

### High Scalability

- Supporting functional expansion boards
- Supporting communication and I/O expansion
- Expansion of up to 20 I/O modules / 680 digital I/O or 162 analog I/O
- Supporting multi-PLC interconnection for data sharing

### High Performance

- Up to 8-channel high-speed counters
  - Unidirectional: 200 kHz
  - Bidirectional: 400 kHz (4x frequency)

### Easy to Use

- Removable terminals for avoiding misoperation
- Supporting USB memory card for program download





# LE Compact PLC

## Technical Data

Model		LE5107L	LE5118	LE5119
Product type		Economical	Standard	
On-board digital input/output		14 DI / 10 DO	24 DI / 16 DO	
Digital output type		Relay	Transistor	Relay
On-board analog input/output		0		
Number of expansion modules		4	20	
Function expansion board		Yes		
High speed counter	Single phase counter	2 channels, 5 KHz	8 channels, 200 KHz	
	Double phase quadruple frequency	1 channel, 20 KHz	8 channels, 200 KHz	
High speed counter range		-231 to 231-1		
High speed output		N/A	4 channels, 100 KHz	N/A
Pulse capture		2 channels, 200 $\mu$ s	8 channels, 10 $\mu$ s	
Fast external interruption		2 channels, 200 $\mu$ s	6 channels, 10 $\mu$ s	
Immediate output		N/A	16 channels	N/A
External memory		USB flash drive	TF card	
Program upload support		No	Yes	
Forced function support		No	Yes	
Real-time clock	Built-in clock	Yes		
	Clock accuracy	$\pm 3$ minutes/month		
Program memory		128 KB	256 KB	
Data memory		10,496 bytes	64 KB	
Power-loss retentive memory		2 KB	8 KB	
Operation speed (bit operation instruction)		0.1 $\mu$ s		
Communications	Communication interface	Yes	1 $\times$ RS485, 1 $\times$ Ethernet	
	Communication protocol	Modbus master/slave station, free port protocol, multi-PLC interconnection (only for terminal connection)	Modbus master/slave station, free port protocol, multi-PLC interconnection (only for terminal connection), AT communication (for program uploading and downloading)	
Input power voltage		100 to 240 V AC	24 V DC	100 to 240 V AC
Output power voltage		N/A	24 V DC	
Dimension (W $\times$ H $\times$ D) mm		116 $\times$ 97 $\times$ 90	147 $\times$ 97 $\times$ 90	

# LE Compact PLC

## Ordering Data

Model	Specifications
<b>CPU module</b>	
LE5107L	24-channel CPU module, 220 V AC power supply, 24 I/O, DI 14 × 24 V DC, DO 10 × relay output, economical
LE5118	40-channel CPU module, 24 V DC power supply, 40 I/O, DI 24 × 24 V DC, DO 16 × transistor output
LE5119	40-channel CPU module, 220 V AV power supply, 40 I/O, DI 24 × 24 V DC, DO 16 × relay output
<b>Digital I/O module</b>	
LE5210	8-channel digital input module, DI 8 × DC 24 V input
LE5211	16-channel digital input module, DI 16 × DC 24 V input
LE5212	32-channel digital input module, DI 32 × DC 24 V input
LE5220	8-channel digital output module, DO 8 × DC 24 V transistor output
LE5221	8-channel digital output module, DO 8 × relay output
LE5223	16-channel digital output module, DO 16 × relay output
LE5224	32-channel digital output module, DO 32 × DC 24 V transistor output
<b>Communication module</b>	
LE5400	Dual serial port (RS485/RS232) communication module
LE5401	Profibus-DP slave communication module
LE5403	Ethernet communication module
LE5405	Ethernet to LE Bus Interface Module. It is used for expanding LE IO modules for the MC controllers, and it integrated with 1 Ethernet port
LE5406	Profibus-DP to LE bus gateway module
<b>Analog I/O module</b>	
LE5310	4-channel analog input, 4 to 20 mA/0 to 20 mA/0 to 10 V
LE5311	8-channel analog input, 4 to 20 mA/0 to 20 mA/0 to 10 V
LE5320	2-channel analog output, 4 to 20 mA/0 to 20 mA/0 to 10 V
LE5321	4-channel analog output, 4 to 20 mA/0 to 20 mA/0 to 10 V
LE5330	4-channel analog input, 4 to 20 mA/0 to 20 mA/0 to 10 V, 2-channel analog output, 4 to 20 mA/0 to 20 mA/0 to 10 V
LE5340	4-channel TC input, J, K, E, N, T, R, S, B-type TC/±80 mV
LE5341	4-channel RTD input, Cu50, Pt100 (385), Pt100 (3916)
LE5341T	4-channel RTD input, Pt1000 (385), Pt1000 (3916)
LE5342	8-channel thermistor input
<b>Function expansion board</b>	
LE5600	RS232 communication expansion board
LE5601	RS485 communication expansion board
LE5610	4-channel digital input function expansion board
LE5620	4-channel transistor digital output function expansion board
LE5611	2-channel analog input expansion board, 4 to 20 mA/0 to 20 mA/0 to 10 V
LE5621	1-channel analog output expansion board, 4 to 20 mA/0 to 20 mA/0 to 10 V
<b>Accessories</b>	
LEX5810	485 round connector-to-USB download cable, 3 m
LEX5812	Extension cable, 2 m
LEX5813	485 round connector to two-core 485 cable, 3 m
LEX5817	Communication cable between LE and HT8001 (round connector to DB9), 3 m
LEA5820	Memory card for backup / restore procedures
LE5405	MCTOLE-IO gateway communication module
LEX5820	MC200X expansion LE module cable

# MC Motion Controller

## Key Features

MC motion controller is designed for complex single-device motion control applications, such as CNC machines, industrial robots, semiconductors, and engineering machinery. MC delivers high-speed, high-precision multi-axis control, supporting up to 64 axes in one system. It also features extensive, user-friendly algorithm libraries for versatile performance.

## High Compatibility

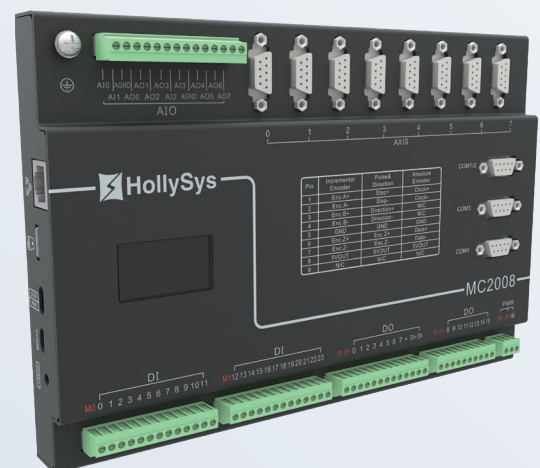
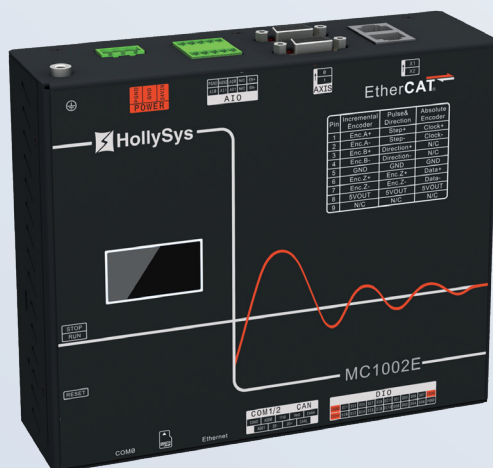
- Supporting EtherCAT MC1002E and RTEX MC1002R
- Compatible with servo drivers from multiple manufacturers
- Seamless integration with LE

## High Performance

- 250  $\mu$ s servo control cycle
- Up to 64-axis control per system
- 64-level look-ahead buffer

## Multiple Control Modes

- Open/closed-loop pulse servo control
- Open/closed-loop analog servo control
- Open/closed-loop bus servo control





# MC Motion Controller

## Technical and Ordering Data

Function	Model	MC2004L	MC2004	MC2008L	MC2008	MC1002R	MC1002E
Axes	Maximum number of axes	64	64	64	64	64	64
	Number of directly connected axes	4	4	8	8	2	2
	Number of bus axes	N/A	N/A	N/A	N/A	32	64
Performance	Processor	ARM cortex-A9 dural core 667 MHz		ARM Cortex-A9 dual core 667 MHz			
	Memory	256 MB DDR3 SDRAM		256 MB DDR3 SDRAM			
	Servo cycle	0.25 to 4 ms		0.25 to 4 ms			
	Position calculation precision	64-bit double-precision floating point		64-bit double-precision floating point			
	Flash	16 MB		16 MB			
	SD card	32 GB, FAT32		32 GB, FAT32			
	Real-time clock	Yes		Yes			
	Power-loss retentive area	8 KB	8 KB	8 KB	8 KB	4 KB	4 KB
Driver interface	Position closed loop    Analog output	N/A	4	None	8	2	2
	Position closed loop    Encoder input	4	4	8	8	2	2
	Position open loop	4	4	8	8	2	2
	Pulse output frequency	2 M	2 M	2 M	2 M	2 M	2 M
	Pulse + direction output	Yes	Yes	Yes	Yes	Yes	Yes
	AB phase quadruple frequency output	Yes	Yes	Yes	Yes	Yes	Yes
	CW/CCW input	Yes	Yes	Yes	Yes	Yes	Yes
	Panasonic RTEX bus	N/A	N/A	N/A	N/A	Yes	N/A
Communication interface	EtherCAT bus	N/A	N/A	N/A	N/A	N/A	Yes
	Ethernet interface	10/100/1000 Mbit/s auto negotiation		10/100/1,000 Mbit/s auto negotiation			
	Modbus-TCP/IP master/slave	Yes	Yes	Yes	Yes	Yes	Yes
	RS232	1	1	1	1	1	1
	RS422	1	1	1	1	0	0
	RS485	2	2	2	2	1	1
	Modbus-RTU master/slave	Yes	Yes	Yes	Yes	Yes	Yes
	CAN2.0B, CAN open	Yes	Yes	Yes	Yes	Yes	Yes
Ontology I/O	Fast DI (24 V DC)	8 (200 KHz)	8 (200 KHz)	8 (200 KHz)	8 (200 KHz)	12 (10 KHz)	12 (10 KHz)
	Slow DI (24 V DC)	16 (1 KHz)	16 (1 KHz)	16 (1 KHz)	16 (1 KHz)	N/A	N/A
	Fast DO (24 V DC)	16 (200 KHz)	16 (200 KHz)	16 (200 KHz)	16 (200 KHz)	8 (10 KHz)	8 (10 KHz)
	Slow DO (24 V DC)	0	0	0	0	0	0
	AI 0V-10V	N/A	2	N/A	4	2	2
	AO -10V-10V	N/A	4	N/A	8	2	2
	High speed capture channel	8	8	8	8	2	2
	High speed output channel	4	4	4	4	1	1
	High speed sampling channel	4	4	4	4	1	1
Software	PWM	2	2	2	2	2	2
	AutoThink programming software	IEC61131-3 ( LD/S17SFC/CFC )		IEC61131-3 ( LD/S17SFC/CFC )			
Physical characteristics	Third-party software connection	Yes		Yes			
	Dimensions (mm) Width × Height × Depth	246.0 × 164.4 × 43.2		246.0 × 164.4 × 43.2		156.0 × 154.4 × 52.0	186.0 × 154.4 × 52.0
	Weight	1.6 kg	1.6 kg	1.6 kg	1.6 kg	1.0 kg	1.0 kg
	Installation mode	Guide rails or supports		Guide rails or supports			
	Operating temperature range	0 to 60°C		0 to 60°C			
Power supply	Rated operating voltage	24 V DC		24 V DC			
	Output load	300 mA @ 5 V DC		300 mA @ 5 V DC			
Certification	CE certification	Yes		Yes			

# FA-AutoThink Engineering Software

## Key Features

FA-AutoThink is a state-of-the-art engineering software that delivers a unified user interface for hardware setup, control logic programming, compilation, downloading, monitoring, debugging, and simulation. It supports seamless secondary development and aligns with IEC 61131-3 standards. It combines cutting-edge technology with user-friendly features to deliver unparalleled performance and safety in PLC applications.

## Safety and Security

- Advanced IP protection with multi-level password controls and data security
- SIL2 compliance for LKS applications to maximize safety
- De-compilation ensuring user logic consistent with downloaded programs

## Compatibility

- Supporting complete PLC automation product family

## Swift Installation

- Lightweight installation file for rapid deployment

## User-Centric Design

- Comprehensive programming instructions and debugging tools
- Streamlined configuration by a tree structure for hardware, tasks, user programs, and data

## Effortless Maintenance

- Integrated logging to track controller communication, including downloading, runtime, and monitoring



Support for Multiple OSs



Independent Intellectual Property



Unified Programming Platform



Swift Installation with Small Configuration File



Standard Programming Language



User-Friendly UI Layout



Rich Instruction Algorithm Library

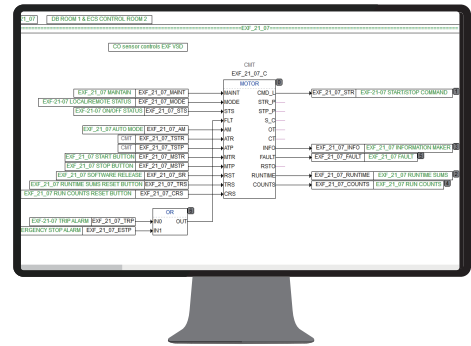
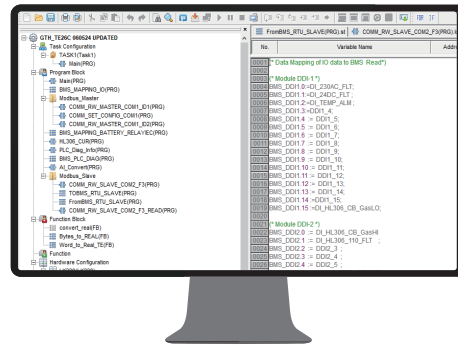


Diversified Debugging Methods

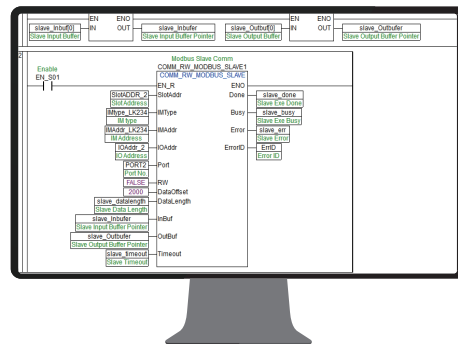
# FA-AutoThink Engineering Software

## Technical Data

User Program Configuration



Hardware Configuration



The screenshot displays the FA-AutoThink software interface. On the left, a tree view shows the project structure, including 'Hardware Configuration' and 'Parameter Configuration'. The main window is titled 'Hardware Configuration' and contains a table of hardware parameters. The table has columns for 'Module Name', 'Slave Address', 'Master Address', 'Response Address', and 'Transmit Address'. The table lists 16 modules, each with a unique slave address and corresponding master, response, and transmit addresses. The table is titled 'Module Parameter Information' and includes a sub-header 'Communication Parameter Information'.

Module Name	Slave Address	Master Address	Response Address	Transmit Address
1	0	1	2	3
2	4	5	6	7
3	8	9	10	11
4	12	13	14	15
5	16	17	18	19
6	20	21	22	23
7	24	25	26	27
8	28	29	30	31
9	32	33	34	35
10	36	37	38	39
11	40	41	42	43
12	44	45	46	47
13	48	49	50	51
14	52	53	54	55
15	56	57	58	59
16	60	61	62	63

At the bottom of the table, there is a note: 'All modules are 16-bit, 16-bit

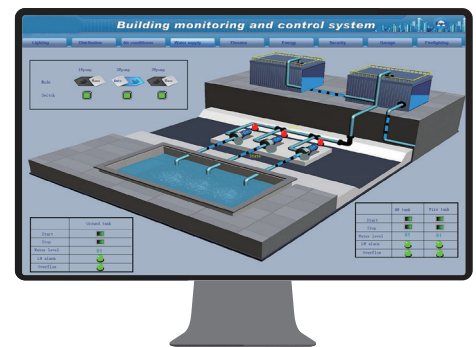


# SCADA Software

## Key Features

HollySys SCADA software offers a comprehensive platform, developed to meet the latest trends in industrial automation. Designed for high-end automation markets, it seamlessly integrates with mainstream PLCs for universal automation applications. With powerful management and monitoring capabilities, rich expansion interfaces, and high stability and reliability, it provides an effective platform for enterprises' timely information acquisition and efficient decision-making for enhanced productivity.

HMI for Building Management



Compatible with Windows OSs of All Series



Automatic Monitoring and  
Informatization Integration  
Management



All-Around Disaster Recovery Solution



Open and Scalable Architecture Design



Remote Terminal Monitoring



Advanced C# Programming



In-depth Development



Integrated Video and Data Monitoring

GIS and Spatio-Temporal Correlation



3D Animation and  
Panoramic  
Visualization

# SCADA Software

## Ordering Data

Type	Model	Specifications
<b>HollyView 6.60</b>		
General version	HollyView 6.60	HollyView 6.60, 64 points, development and operation integrated
	HollyView 6.60	HollyView 6.60, 128 points, development and operation integrated
	HollyView 6.60	HollyView 6.60, 256 points, development and operation integrated
	HollyView 6.60	HollyView 6.60, 512 points, development and operation integrated
	HollyView 6.60	HollyView 6.60, 1024 points, development and operation integrated
	HollyView 6.60	HollyView 6.60, unlimited points, development and operation integrated
General web version	HollyView 6.60+Web	HollyView 6.60, 64 points, development and operation integrated, supporting web distribution, 10 users
	HollyView 6.60+Web	HollyView 6.60, 64 points, development and operation integrated, supporting web distribution, 30 users
	HollyView 6.60+Web	HollyView 6.60, 128 points, development and operation integrated, supporting web distribution, 10 users
	HollyView 6.60+Web	HollyView 6.60, 128 points, development and operation integrated, supporting web distribution, 30 users
	HollyView 6.60+Web	HollyView 6.60, 256 points, development and operation integrated, supporting web distribution, 10 users
	HollyView 6.60+Web	HollyView 6.60, 256 points, development and operation integrated, supporting web distribution, 30 users
	HollyView 6.60+Web	HollyView 6.60, 512 points, development and operation integrated, supporting web distribution, 10 users
	HollyView 6.60+Web	HollyView 6.60, 512 points, development and operation integrated, supporting web distribution, 30 users
	HollyView 6.60+Web	HollyView 6.60, 1024 points, development and operation integrated, supporting web distribution, 10 users
	HollyView 6.60+Web	HollyView 6.60, 1024 points, development and operation integrated, supporting web distribution, 30 users
	HollyView 6.60+Web	HollyView 6.60, unlimited points, development and operation integrated, supporting web distribution, 10 users
	HollyView 6.60+Web	HollyView 6.60, unlimited points, development and operation integrated, supporting web distribution, 30 users
<b>HollyView 7.5</b>		
General version	HollyView 7.5	HollyView 7.5, 64 points, development and operation integrated
	HollyView 7.5	HollyView 7.5, 128 points, development and operation integrated
	HollyView 7.5	HollyView 7.5, 256 points, development and operation integrated
	HollyView 7.5	HollyView 7.5, 512 points, development and operation integrated
	HollyView 7.5	HollyView 7.5, 1024 points, development and operation integrated
	HollyView 7.5	HollyView 7.5, unlimited points, development and operation integrated
Web license	HollyView 7.5	Supporting web distribution, 10 users
	HollyView 7.5	Supporting web distribution, 30 users
OPC UA license	HollyView 7.5	Supporting OPC UA

# SCADA Software

## Ordering Data

Type	Model	Specifications
<b>HollyControl</b>		
Development and operation integrated environment	HollyControl_Development and Operation_100	HollyControl, 100 points, development and operation integrated
	HollyControl_Development and Operation_200	HollyControl, 200 points, development and operation integrated
	HollyControl_Development and Operation_500	HollyControl, 500 points, development and operation integrated
	HollyControl_Development and Operation_1K	HollyControl, 1,000 points, development and operation integrated
	HollyControl_Development and Operation_2K	HollyControl, 2,000 points, development and operation integrated
	HollyControl_Development and Operation_5K	HollyControl, 5,000 points, development and operation integrated
	HollyControl_Development and Operation_10K	HollyControl, 10,000 points, development and operation integrated
	HollyControl_Development and Operation_20K	HollyControl, 20,000 points, development and operation integrated
	HollyControl_Development and Operation_50K	HollyControl, 50,000 points, development and operation integrated
	HollyControl_Development and Operation_100K	HollyControl, 100,000 points, development and operation integrated
	HollyControl_Development & Operation_Unlimited	HollyControl, unlimited points, development and operation integrated
Operation environment	HollyControl_Operation_100	HollyControl, 100 points, operation only
	HollyControl_Operation_200	HollyControl, 200 points, operation only
	HollyControl_Operation_500	HollyControl, 500 points, operation only
	HollyControl_Operation_1K	HollyControl, 1,000 points, operation only
	HollyControl_Operation_2K	HollyControl, 2,000 points, operation only
	HollyControl_Operation_5K	HollyControl, 5,000 points, operation only
	HollyControl_Operation_10K	HollyControl, 10,000 points, operation only
	HollyControl_Operation_20K	HollyControl, 20,000 points, operation only
	HollyControl_Operation_50K	HollyControl, 50,000 points, operation only
	HollyControl_Operation_100K	HollyControl, 100,000 points, operation only
	HollyControl_Operation_Unlimited	HollyControl, unlimited points, operation only
Advanced programming	HollyControl_Advanced_Programming	HollyControl, supporting advanced programming (custom classes, external assembly calls and C# language extensions)



# SCADA Software

## Ordering Data

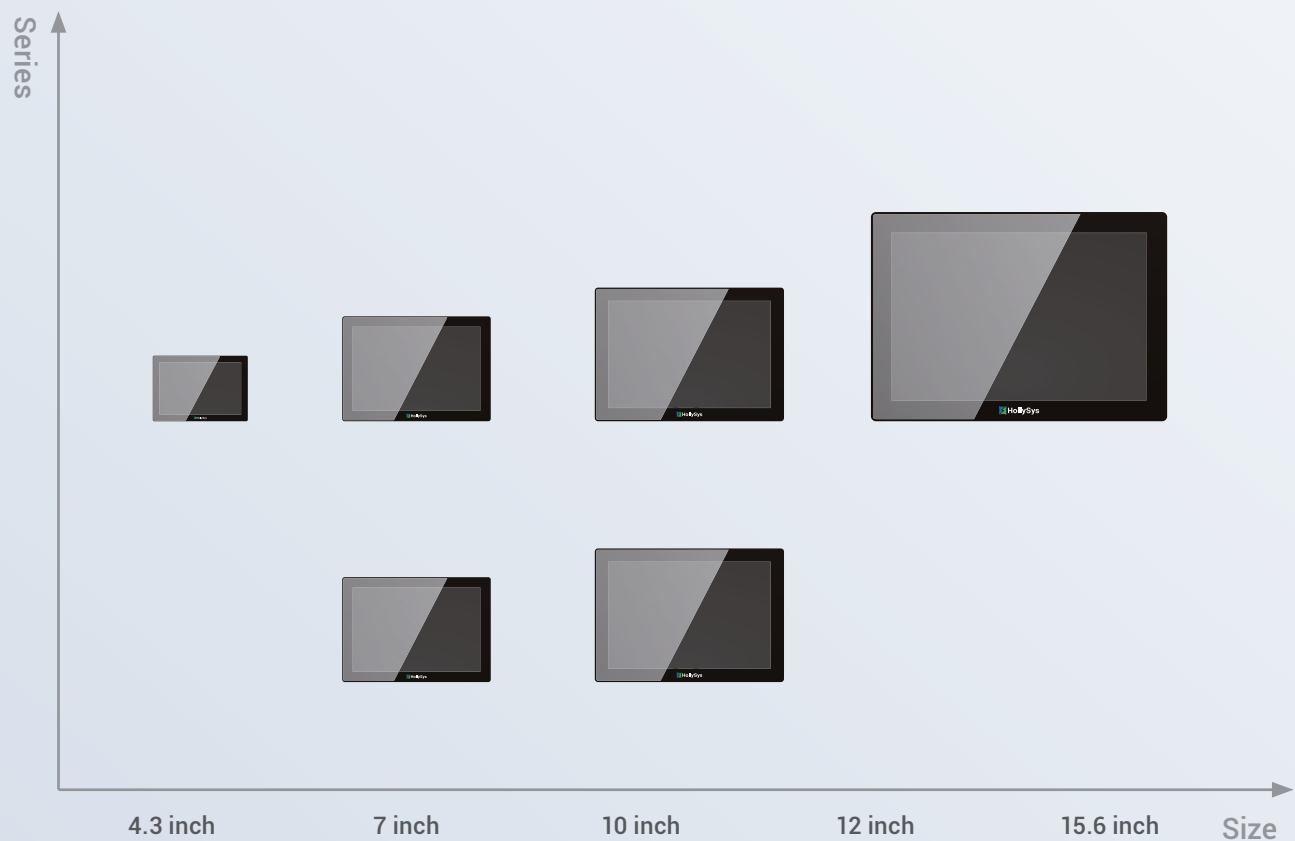
Type	Model	Specifications
<b>HollyControl</b>		
System server	HollyControl_ServerClient_5	HollyControl, system server for 5 clients
	HollyControl_ServerClient_5	HollyControl, system server for 5 clients
	HollyControl_ServerClient_5	HollyControl, system server for 5 clients
	HollyControl_ServerClient_5	HollyControl, system server for 5 clients
Web service	HollyControl_WEB_5	HollyControl, web server with 5 clients
	HollyControl_WEB_20	HollyControl, web server with 20 clients
	HollyControl_WEB_50	HollyControl, web server with 50 clients
	HollyControl_WEB_100	HollyControl, web server with 100 clients
External access	HollyControl_Email	HollyControl, Email and SMS function
	HollyControl_WebService	HollyControl, Web API for third-party system (e.g. MES)
	HollyControl_Email_WebService	HollyControl, Email, SMS and Web API
Video service	HollyControl_VideoStream_50	HollyControl, supporting maximum 50 channels of video input
	HollyControl_VideoStream_100	HollyControl, supporting maximum 100 channels of video input
	HollyControl_VideoStream_200	HollyControl, supporting maximum 200 channels of video input
	HollyControl_VideoStream_500	HollyControl, supporting maximum 500 channels of video input
	HollyControl_VideoStream_1000	HollyControl, supporting maximum 1,000 channels of video input
Mobile app	HollyControl_MobileServer_1	HollyControl, mobile server with 1 mobile client, supporting access from 1 mobile terminal at the same time
	HollyControl_MobileServer_2	HollyControl, mobile server with 2 mobile client, supporting access from 2 mobile terminal at the same time
	HollyControl_MobileServer_5	HollyControl, mobile server with 5 mobile client, supporting access from 5 mobile terminal at the same time
GIS	HollyControl_GIS	HollyControl, supporting integration with GIS
SOE	HollyControl_SOE	HollyControl, supporting SOE function of HollySys devices

# HMI

## Key Features

HollySys Human Machine Interface (HMI) utilizes embedded technology and low-power ARM Cortex-A8 chips for seamless integration with mainstream PLCs. In response to the pressing need to reduce production costs, it offers user-friendly interfaces for convenient operation and improving work efficiency.

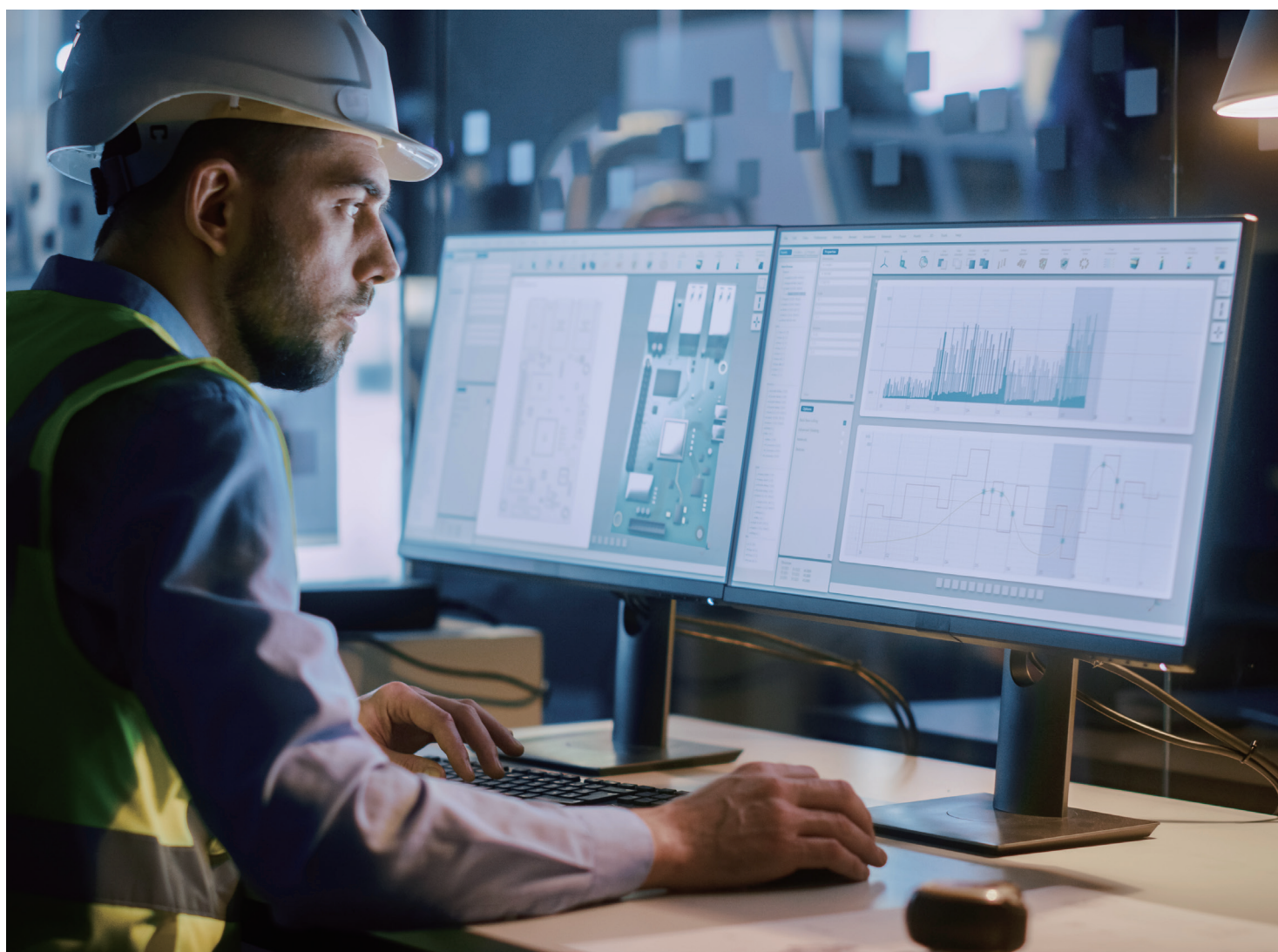
- 16.77 million true color display
- User-friendly interfaces
- Rich image libraries
- Support for integration with mainstream PLCs
- Support for customization of communication drivers





## Ordering Data

Model	Specifications
HT8421T	4.3" touch screen/HT8421T/480 × 272/16.77 million color TFT display
HT8421TE	4.3" touch screen/HT8421TE/480 × 272/16.77 million color TFT display/network port
HT8432T	4.3" touch screen/HT8432T/480 × 272/16.77 million color TFT display
HT8701T	7" touch screen/HT8701T/800 × 480/16.77 million color TFT display
HT8701TE	7" touch screen/HT8701TE/800 × 480/16.77 million color TFT display/network port
HT8721T	7" touch screen/HT8721T/800 × 480/16.77 million color TFT display/economic
HT8732T	7" touch screen/HT8732T/800 × 480/16.77 million color TFT display
HT8732TE	7" touch screen/HT8732TE/800 × 480/16.77 million color TFT display / network port
HT8A01T	10" touch screen/HT8A32T/1,024 × 600/16.77 million color TFT display
HT8A01TE	10" touch screen/HT8A01T/1,024 × 600/16.77 million color TFT display/network port
HT8A32T	10" touch screen/HT8A32T/1,024 × 600/16.77 million color TFT display
HT8A32TE	10" touch screen/HT8A32TE/1,024 × 600/16.77 million color TFT display/network port
HT8C21T	12.1" touch screen / HT8C01T/800 × 600/16.77 million color TFT display/network port
HT8C01T	12.1" touch screen / HT8C01T/1,024 × 768/16.77 million color TFT display/network port
HT8F01T	15" touch screen/HT8F01T/1,024 × 768/16.77 million color TFT display/network port
HT8F32T	15.6" touch screen/HT8F32T/1,920 × 1,080/16.77 million color TFT display/network port
HT8732TE-N	7" touch screen/HT8732TE-N/1,024 × 600/16.77 million color TFT display
HT8A32TE-N	10.2" touch screen/HT8A32TE-N/1,024 × 600/16.77 million color TFT display



## Key Accounts

 We create chemistry	 energy   chemicals   resources			
				
				
				
				

For further inquiries

 [sales\\_international@hollysys.com](mailto:sales_international@hollysys.com)

For more information

 [www.hollysys.com](http://www.hollysys.com)

 HollySys Automation Technologies

 HollySys Asia Pacific

### Singapore

Changi Business Park  
Crescent,  
#04-01/02/03 Plaza  
8 @ CBP, Tower A,  
Singapore 486025

### China

No.2 Di Sheng Middle  
Road, Econom-  
ic-Technological  
Development Area,  
Beijing 100176

### India

D-84, Ground Floor,  
Sector 63, Noida,  
Uttar Pradesh 201301

### Indonesia

Metropolitan Tower,  
10th Floor Unit E Jl.  
R.A. Kartini Kav. 14,  
Jakarta 12430

### Uzbekistan

10, Mahmoud Tarabi  
Street, Tashkent,  
Uzbekistan